

**\$599,000 + GST**

**T3D 03**



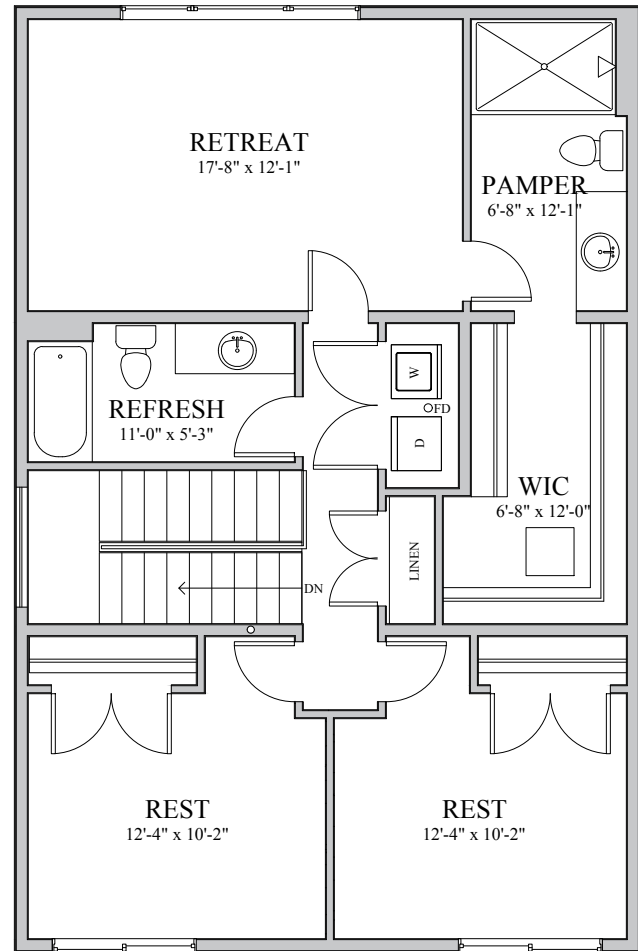
**5108 Turtle Pond Court, Vernon, BC**

2 Storey Single Family Home - 2632 Total SQ.FT.

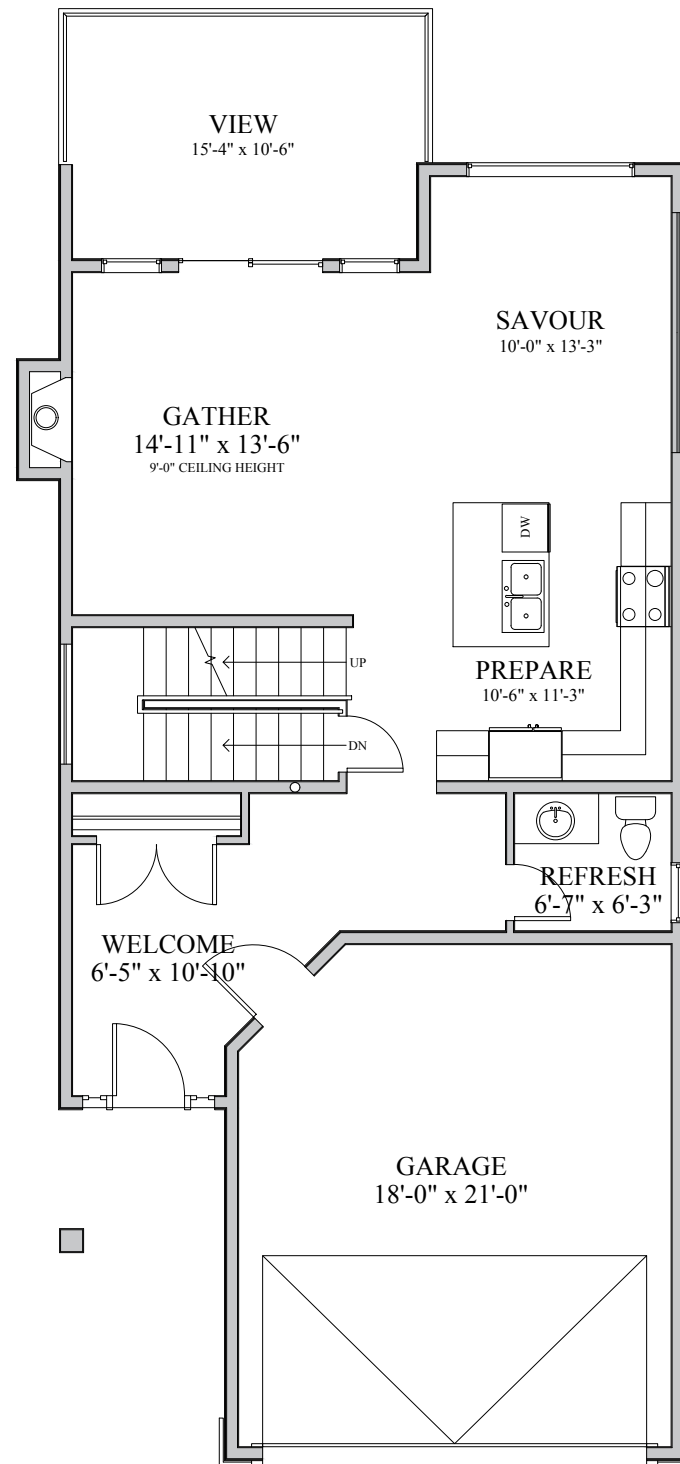
Width - 26'-0" x Length - 60'-6"

- Bedrooms - 3
- Bathrooms - 2.5
- Large Master with Walk-in Closet
- Lake View from Master Suite
- Open Concept on Main Floor
- Large Walk-out Basement with Option to Finish
- Double Car Garage
- Deck Access Off Living Room
- 9'-0" Ceiling on Main Floor
- Convenient Upper Floor Laundry

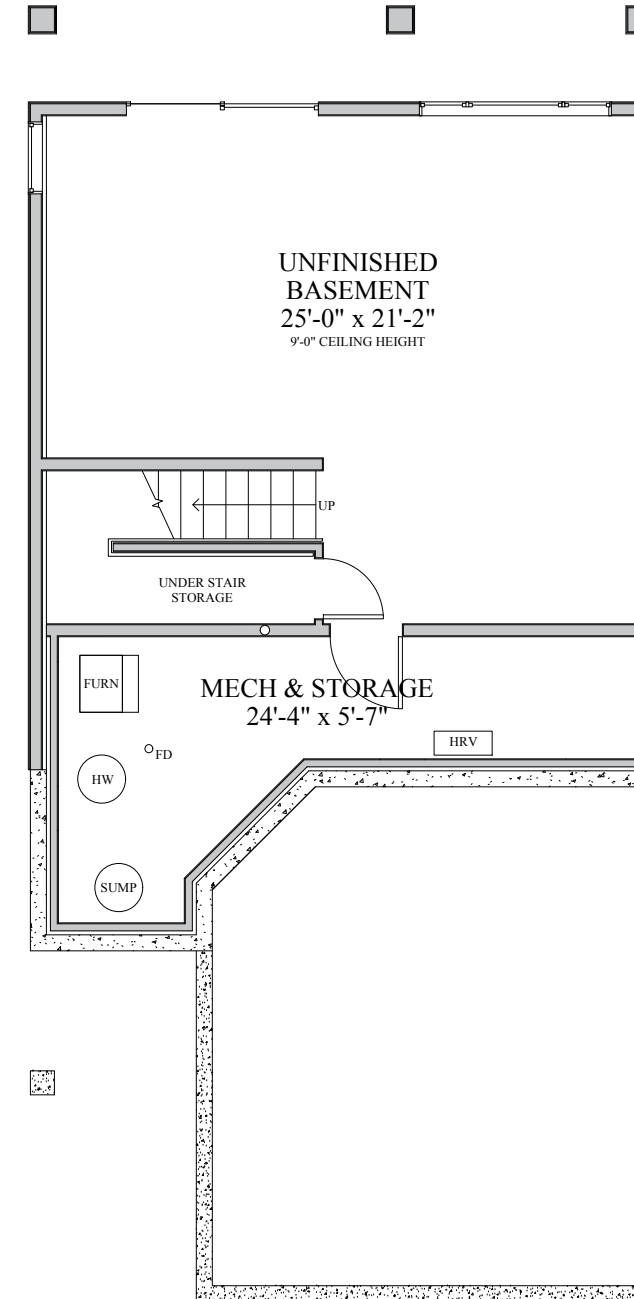
UPPER FLOOR PLAN  
1024 SQ. FT.



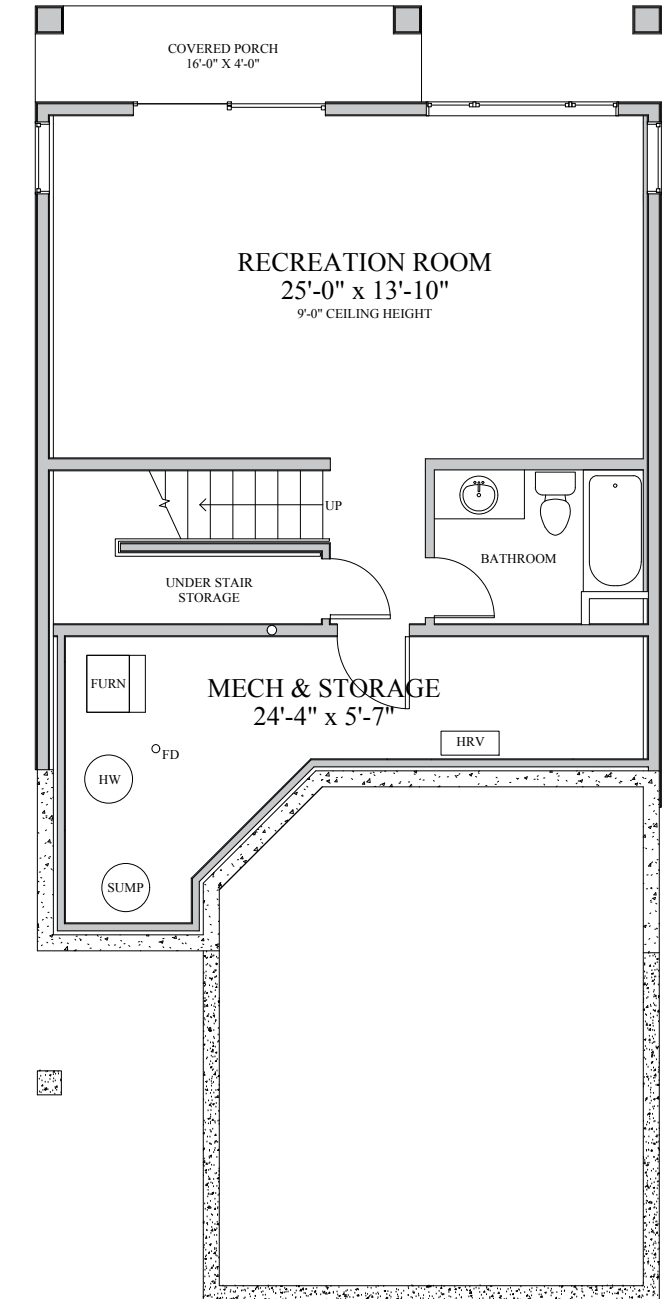
MAIN FLOOR PLAN  
857 SQ. FT. + DOUBLE GARAGE



LOWER FLOOR (UNFINISHED OPTION)  
802 SQ. FT.



LOWER FLOOR (FINISHED OPTION)  
802 SQ. FT. (630 SQ. FT. FINISHED)



\*MINOR PLAN CHANGES MAY OCCUR