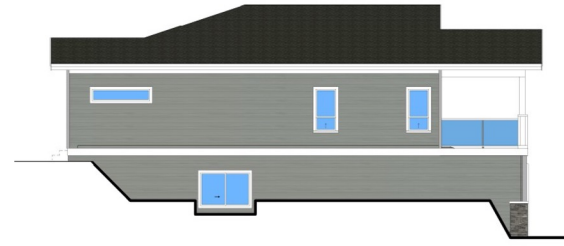


# Season's – Spec House

---

Lot: SE-34 Spec House

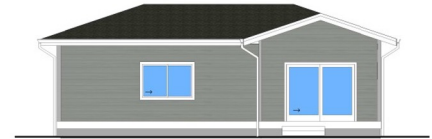
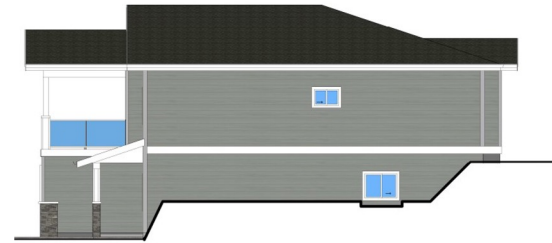




② Left Side Elevation  
3/16" = 1'-0"



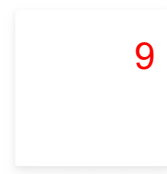
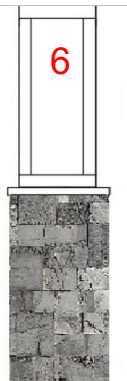
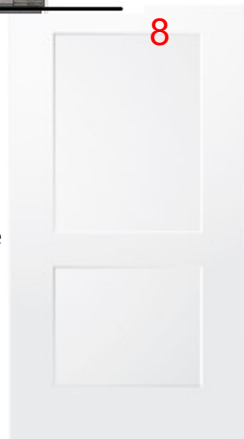
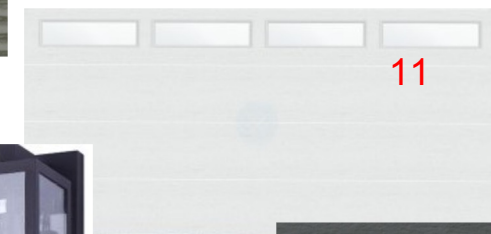
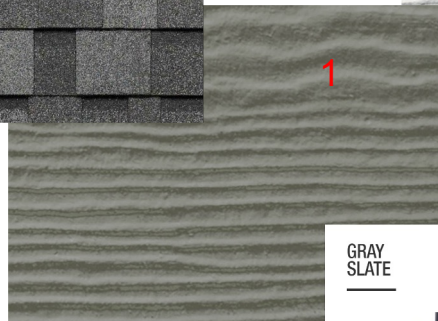
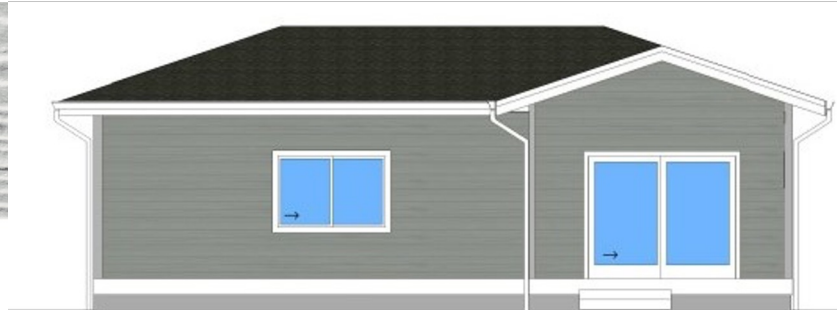
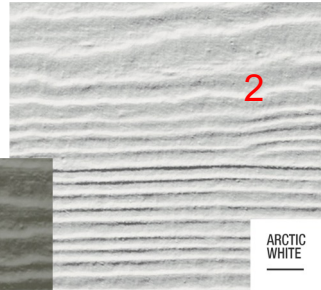
① Front Elevation  
3/16" = 1'-0"



③ Rear Elevation  
3/16" = 1'-0"

Landscaping design to be confirmed





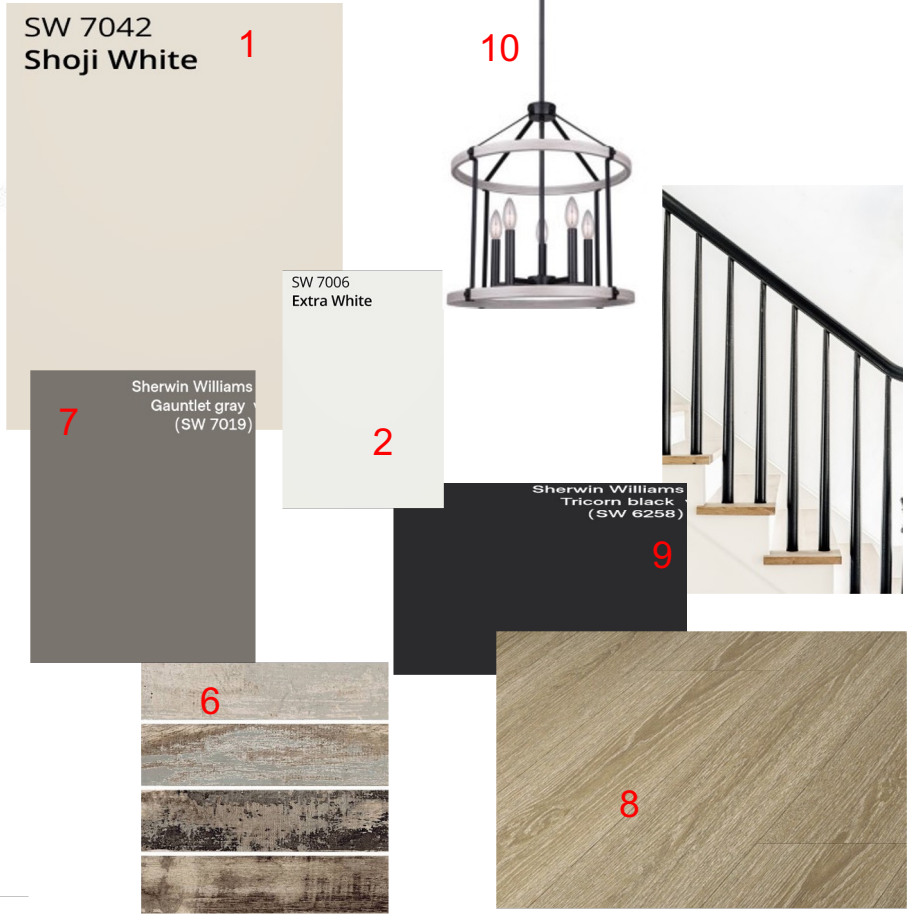
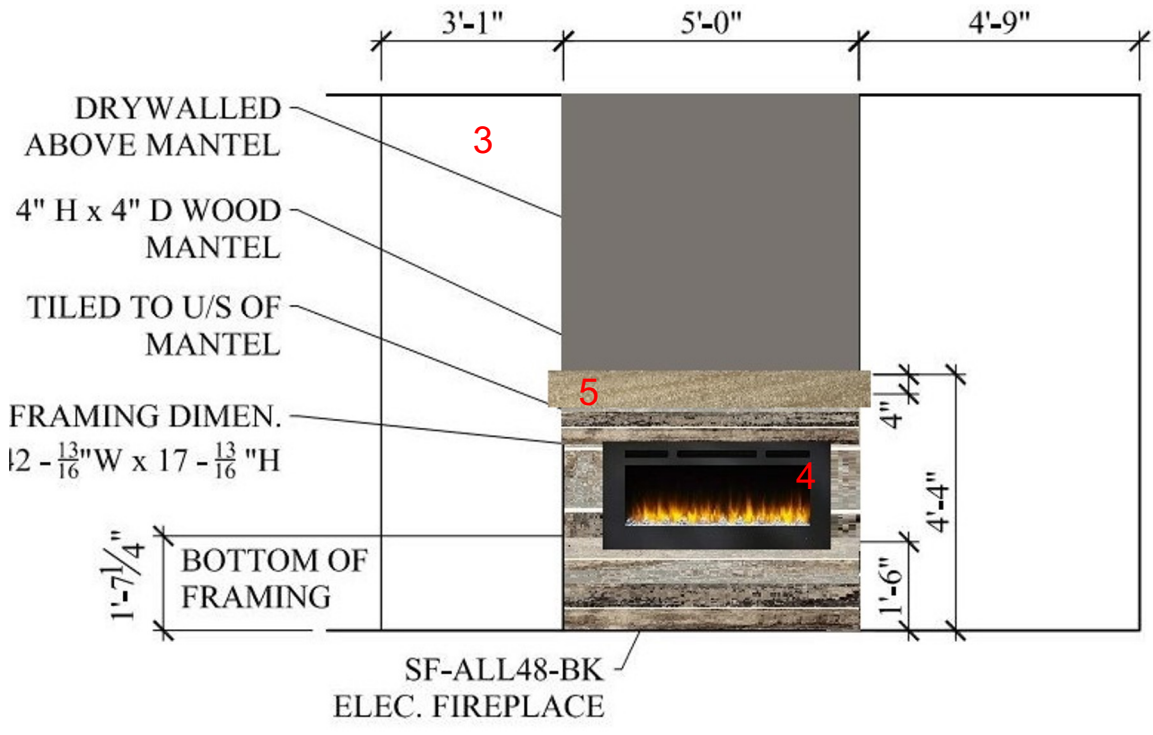
1. Main Siding including corners – JH Gray Slate
2. Exterior Trim – JH Arctic White
3. Shakes – JH Night Gray
4. IKO Cambridge Shingles – Harvard Slate
5. Stone – Shadowplay Split Modular by Timberstone
6. Front Post Detail – Arctic White on top and Shadowplay stone on the bottom
7. Gutters, Downspouts and Soffits – Gentek Rainware White
8. Front Door – DRS2K profile painted JH Arctic White
9. Railcraft Railing – Akzo Whistler White
10. Econodek Vinyl Decking – Grey Timber
11. Steelcraft Garage Door – Flush series in white with clear glass windows
12. Door Hardware – London Grip in black
13. Light Sconces

# Exterior Concept



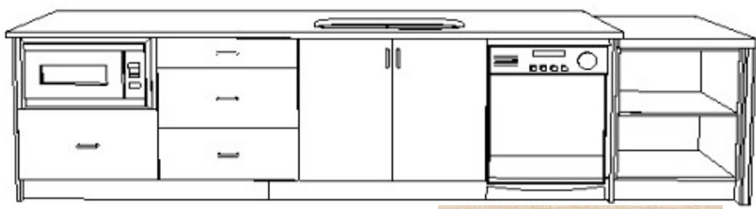
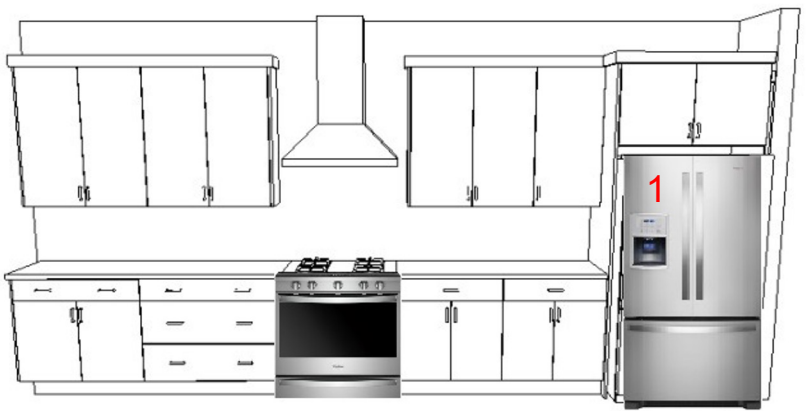


- 1. Main Colour – SW7042
- 2. Trim colour – SW7006
- 3. Fireplace Surround Design
- 4. Fireplace Selection – Electric Simplifire 48
- 5. Mantel – Stained to match VP Butter Cream
- 6. Fireplace tile to mantel height – Colorart Bone
- 7. Feature wall on fireplace – SW7019
- 8. Vinyl Plank Flooring – Butter Cream
- 9. Stair Railing – black spindles with handrail painted to SW6258
- 10. Foyer Light Fixture



# Great room/Fireplace/Stairwell

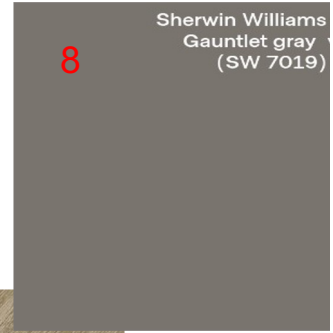




1. Appliances – Whirlpool in Stainless Steel
2. Cabinetry – Uppers PVC Frosty White
3. Cabinetry - Lovers and island MDF painted Amherst Gray
4. Island extension - L piece stained to Gray Wolf
5. Plumbing Fixtures – Ever series in black with stainless-steel sink
6. Island Pendants
7. Main wall colour – SW7042
8. Feature Wall in Dining room – SW7019
9. Trim – SW7006
10. Countertops – Miami Vena Quartz
11. Vinyl Plank Flooring – Butter Cream
12. Dining Room Light Fixture
13. Cabinetry Door Hardware - 9325-160-DBK
14. Kitchen Backsplash – Regoli 3x12 Bianco White Sticks



7



8



12



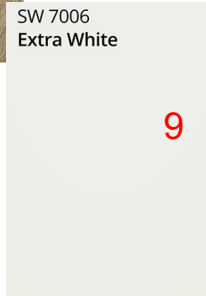
6



11



3



9



4



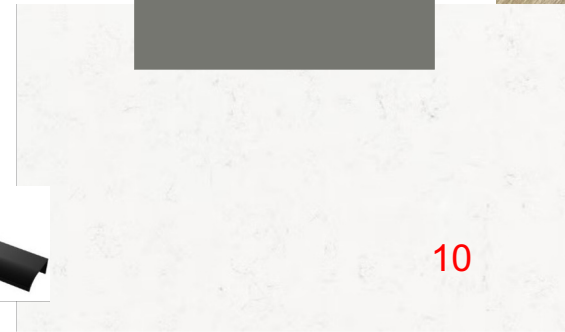
14



2



13



10

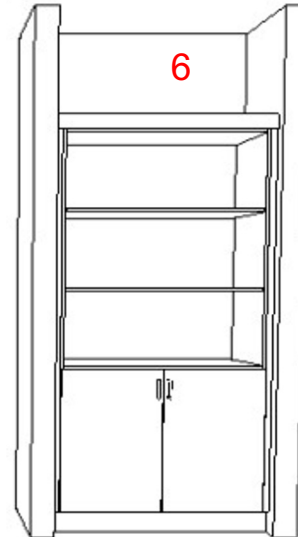
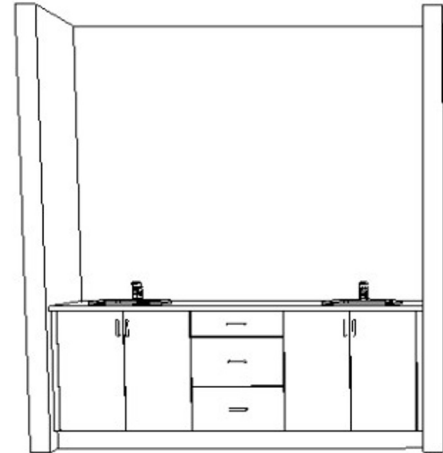
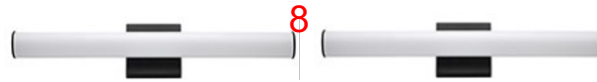
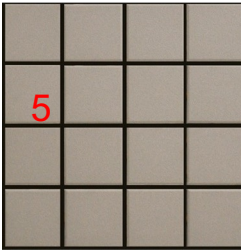


5

# Kitchen/Dining/Pantry



1. Ensuite Floor and Shower Walls -Centura Whitehall Ash  
12x24 in matte
- 2.Plumbing Fixtures – Ever series in black
- 3.Undermount Sink
- 4.Quartz Countertop - Silestone Miami White
- 5.Shower Floor Tile – Arvex 2x2 Light Gray
- 6.Ensuite Linen
- 7.Barn Door Hardware – flat strap tracking with rectangular pulls
- 8.Ensuite Light Fixtures
- 9.Main Colour – SW7042
- 10.Trim – SW7006
- 11.Carpet – Heron Cove Desert Light
- 12.Interior Doors – Whitman profile
- 13.Door Hardware – Bergen in black
- 14.Bedroom Light Fixture



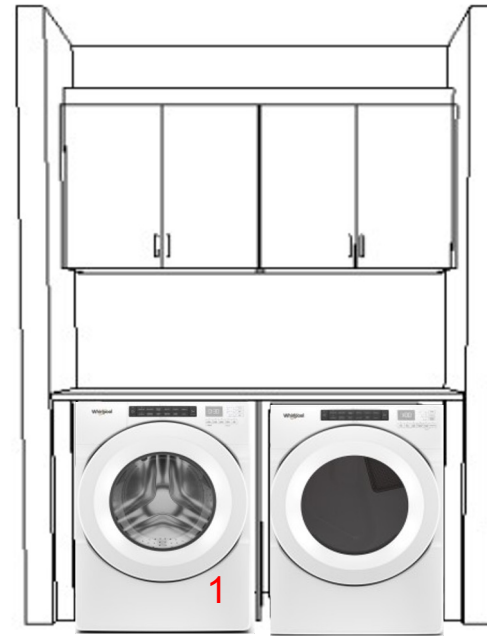
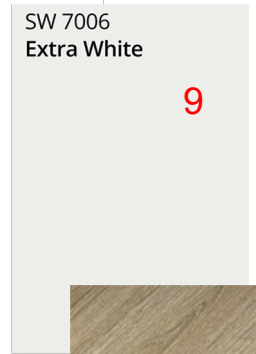
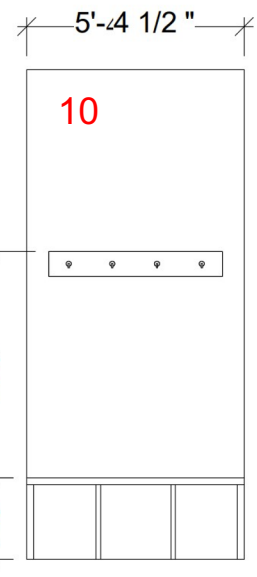
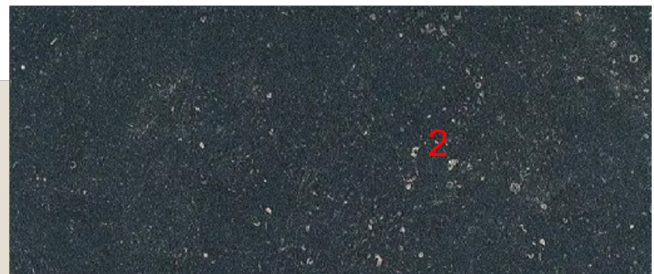
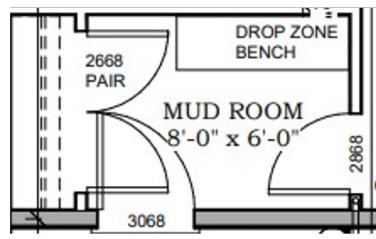
Whitman (Lyndon) Platinum Pkg

# Primary Bedroom and Ensuite





- 1. Washer/Dryer – Whirlpool in white
- 2. Laundry Countertop - Arborite P346RM - Inukshuk Carbon
- 3. Cabinetry – PVC Frosty White
- 4. Cabinetry Door Hardware - Colville Modern Pull (9325)
- 5. Main Colour – SW7042
- 6. LED Disc Lights
- 7. Interior Door – Whitman profile
- 8. Vinyl Plank Flooring – Butter Cream
- 9. Mudroom Bench and Trim colour – SW7006
- 10. Mudroom Bench Design
- 11. Door Hardware – Bergen in black



① Mudroom Bench  
1/4" = 1'-0"

# Laundry Room and Mudroom



- 1.Carpet – Heron Cove Desert Light
- 2.Main Colour – SW7042
- 3.Trim Colour – SW7006
- 4.Vinyl Plank Flooring – Butter Cream
- 5.Interior Doors – Whitman
- 6.Door Hardware – Bergen round rosette in black
- 7.Bathroom Cabinetry – PVC Frosty White
- 8.Lamionate Countertop - Formica 9536-34 Quarzite Bianco
- 9.Cabinetry Door Hardware - Colville Modern Pull (9325)
- 10.Bathroom Plumbing Fixtures – Ever series in black
- 11.Tub/Shower Unit
- 12.Bathroom Light Fixture
- 13. Bedroom LED Disc Light
- 14. Drop in sink

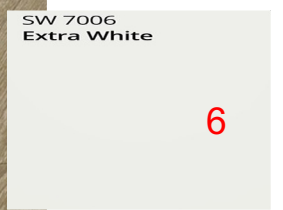
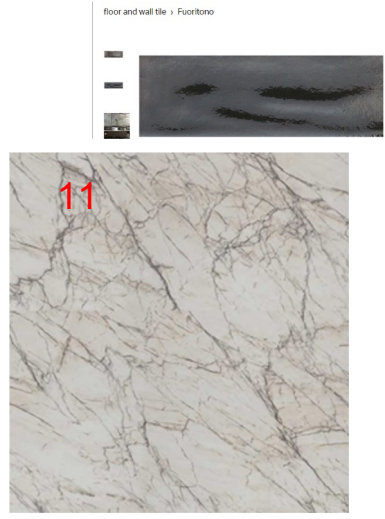
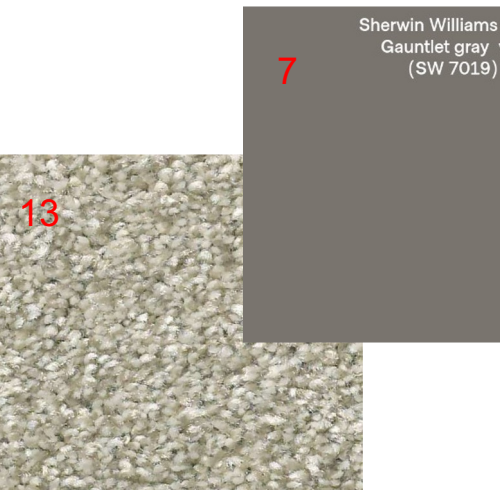
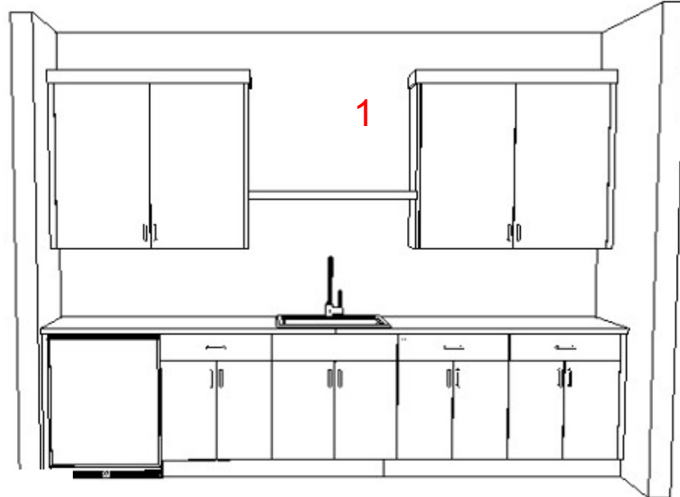


# Other Bedrooms and Bathrooms





- 1.Optional Bar Design
- 2.Bar Laminate Countertop -Formica Back Fusion 6320-46
- 3.Silgranit sink in Metallic Grey with black Riobel faucet
4. Floating Shelf – stained to Gray Wolf by Kekuli Bay Cabinetry
5. Main colour – SW7042
6. Trim – SW7006
7. Feature Colour in Den – SW7019
- 8.Vinyl Plank Flooring – Butter Cream
- 9.Shower/Tub unit
- 10.Bathroom Backsplash – 1 row of Fourtino Nero by Julian staggered
11. Bathroom Laminate Countertop - Formica 9536-34 Quartzite Bianco
- 12.Plumbing Fixtures – Ever series in black
- 13.Carpet - Heron Cove Desert Light



# Lower Floor

